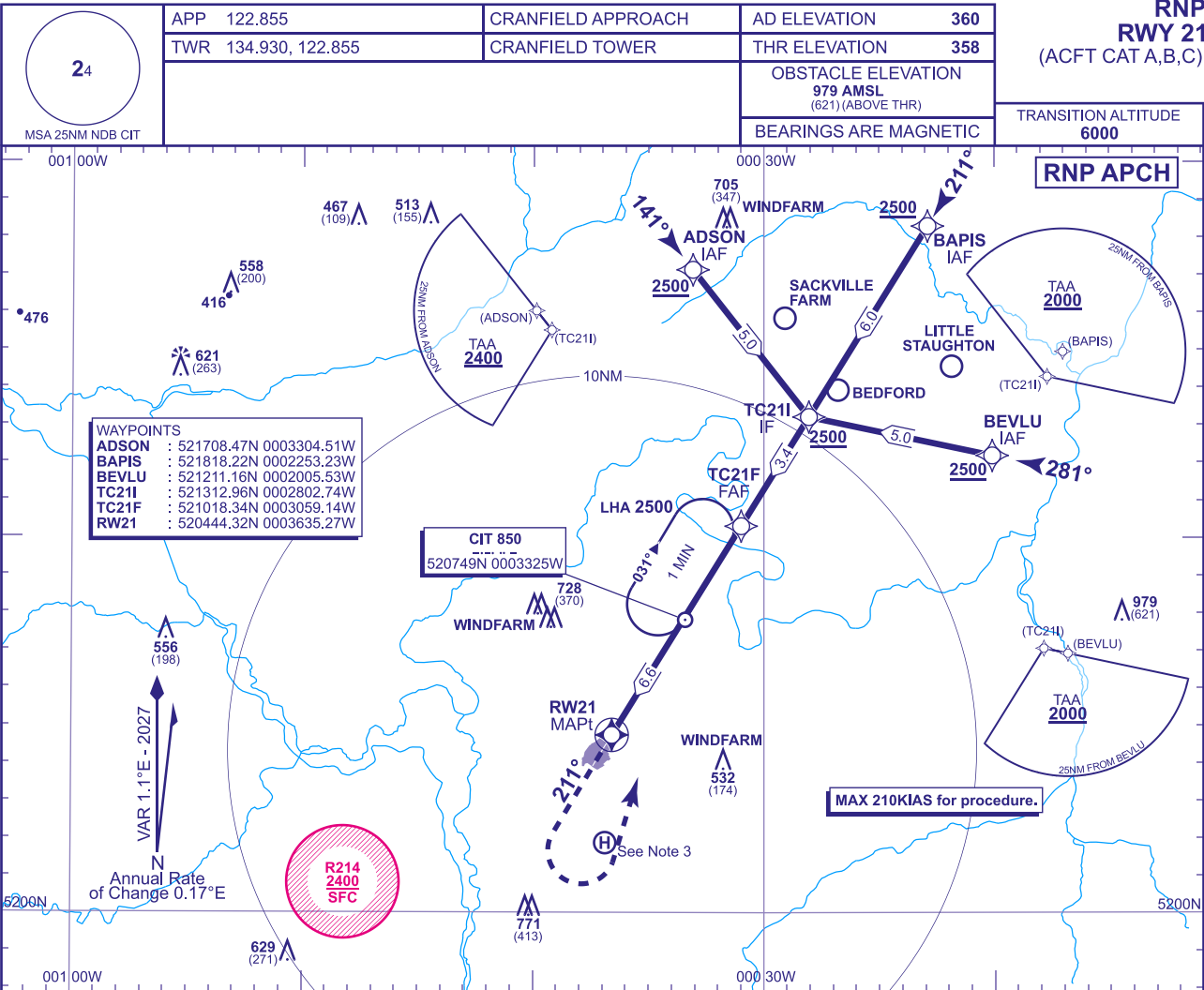


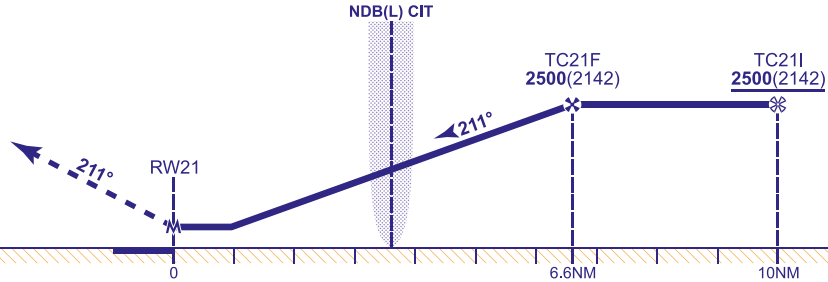
INSTRUMENT APPROACH CHART - ICAO

CRANFIELD
RNP
RWY 21
(ACFT CAT A,B,C)



RECOMMENDED PROFILE Gradient 5.2%, 320FT/NM						
NM	6	5	4	3	2	1
ALT(HGT)	2320(1962)	2000(1642)	1680(1322)	1370(1012)	1050(692)	730(372)

MAPt (LNAV): RW21
Climb straight ahead to 1500, then climbing left turn to 2500 to join the NDB(L) CIT hold.



Aircraft Category		A	B	C	Rate of descent	G/S KT	160	140	120	100	80
OCA (OCH)	LNAV	690(332)	690(332)	690(332)		FT/MIN	850	740	640	530	420
VM(C)OCA (OCH AAL)	Total Area	800(440)	970(610)	1150(790)							

NOTES 1 CIT NDB(L) hold restrictions: MAX holding level 5000, MAX 180KIAS.
2 Missed Approach Procedure uses conventional navigation aids and is not available without NDB(L) CIT.
3 Occasional helicopter activity at Hellmech Heliport (520152N 0003653W).